



Kriimpas India Pvt. Ltd.

Welcome to Kriimpas India Pvt. Ltd., where we offer comprehensive solutions for all your material processing needs. Since 2012, we have been dedicated to providing top-notch machinery and services to our valued customers.

Profile extrusion line

Agenda

- **Introduction**
- **About us**
- **Our values**
- **Our Solutions**
- **Our offering**
- **Product Details**
- **Clientele**
- **Our USP**
- **Technology and Innovation**
- **Team**
- **Contact Details**



Introduction

Introduction

Before we dive into the details, let me introduce my self. As mentioned, I am Vaibhav Patel, and I've been with Kriimpas India Pvt Ltd since its incorporation. We are passionate about extrusion technology and its wide applicability for different processes and applications.

Our range of offerings includes Processing Machinery for different Materials, Motion Based Solutions, Automation & Technological Solutions, Additive & Hybrid Manufacturing Solutions, and a wide array of spares and parts. Each product is meticulously engineered using the latest technology and premium quality raw materials sourced from reliable vendors. Our commitment to excellence ensures that our products meet stringent industry standards, delivering exceptional quality and performance.

Our solutions have gained recognition worldwide, with satisfied customers in All countries. We continuously strive to expand our global presence and earn the trust of more customers. We export our products to All countries, solidifying our reputation as a leading provider of material processing machinery.

About us

Who we are?

- Incorporated in 2012
- Incorporated by Vaibhav Patel

Our Mission

- To deliver a solution
- Customization as per clients need
- Reliable
- Performance that exceed our client expectations
- Best return on investment

Our Vision

- To establish dedicated, Preferred partnership with client to delivery customer specific solution with
- Transparency, Sustainability and reliability

Welcome to Kriimpas India Pvt. Ltd.! We specialize in providing top-notch processing machinery and solutions to meet your industrial needs. In our machinery solutions segment, we offer a comprehensive range, including polymers processing machinery, food processing machinery, pharmaceutical processing machinery, and material handling systems.

Looking for motion-based solutions? We've got that too! Our offerings include components for motion solutions, drives, controllers, sensors, and motion platforms.



Our Values

EXCELLENCE IN ENGINEERING

CUSTOMER CENTRIC FOCUS

RELIABILITY AND DURABILITY

CONTINUOUS INNOVATION

INTEGRATI AND TRANSPARENCY

COLLABORATIVE TEAMWORK

ENVIRONMENTAL STEWARDSHIP

CUSTOMER EDUCATION AND SUPPORT

AGILITY AND ADAPTIBILITY

SOCIAL RESPONSIBILITY

KRIIMPAS

Machinery Solutions

POLYMER PROCESSING MACHINERY



We are the leading provider of polymer processing machinery in India. We specialize in offering a wide range of solutions tailored to meet your needs, including pipe extrusion lines, profile extrusion lines, plate & sheet extrusion lines, film extrusion lines, pelletizing lines, recycling lines, spares and consumable parts, and ancillary equipment.

FOOD PROCESSING MACHINERY



We're India's top supplier of food processing machinery, boosting efficiency and quality. Our machines cover a wide range, from making corn flakes to fortified rice. We specialize in extrusion cooking for various products like baby food and edible straws, making cheese balls, biscuits, and more.

PHARMACEUTICALS PROCESSING



At Kriimpas India Pvt. Ltd., we're your top choice for pharmaceutical machinery in India. We offer advanced solutions for the industry, including hot melt extrusion, granulation lines, and adhesive extrusion with APIs. We specialize in compounds for implants, medical plastics like wound plasters, and more.

MATERIAL HANDLING SYSTEM



Kriimpas India Pvt. Ltd. offers high-quality material handling systems in India. Our products include various feeders, conveying systems, storage silos, weighing and packing units, and more. Whether you need to transport, store, or package materials, we have the solution for you.

Our Offerings in **(Polymer Processing Machinery)**

Pipe Extrusion Line

Profile Extrusion Line

Plate & Sheet Extrusion Line

Film Extrusion Line

Pelletizing Line

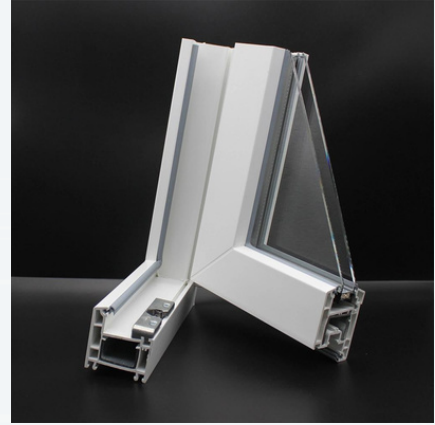
Recycling Line

Spares and Consumable

Parts Ancillary equipments

Our Offerings in (Profile Extrusion Line)

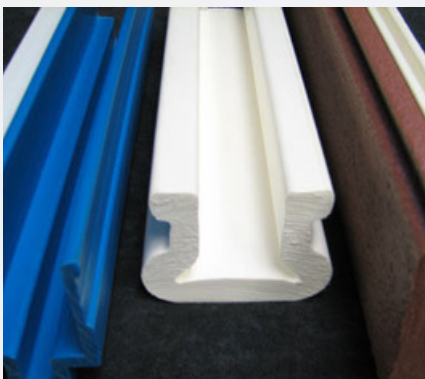
PVC Window Door Profile Extrusion Line



PVC WPC Panel Board Extrusion Line



Special Plastic Profile Extrusion Line



Our Offerings in **(Profile extrusion line)**

PVC Window Door Profile Extrusion Line

PVC Window Shutter Extrusion Line

PVC Door Frame Extrusion Line

PVC Folding Door Extrusion Line

Hollow PVC Door Board Extrusion Line

PVC Window Door Profile Extrusion Line

For over 12 years, Kriimpas India has been a pioneering force in the realm of plastic extrusion machines and comprehensive solutions. Our commitment to excellence has propelled us to the forefront of the industry,

As leaders in extrusion machinery, we take pride in our PVC window door profile extrusion line series, which encompasses a versatile range of solutions. From PVC window profile extrusion lines to PVC window shutters, shades, blinds, folding door panels, door frames, and both hollow and solid door extrusion lines, Kriimpas India offers cutting-edge technology and unparalleled expertise to meet diverse industry needs.



Types of PVC Window Door Profile Extrusion Line

- **PVC Window Profile Extrusion Line**
- **PVC Window Shutter Extrusion Line**
- **PVC Door Frame Extrusion Line**
- **PVC Folding Door Extrusion Line**
- **Hollow PVC Door Board Extrusion Line**

PVC Window Profile Extrusion Line



Kriimpas India specializes in high-quality PVC window profile extrusion lines, equipped with either special conical twin screw extruders or parallel screw extruders. Our machinery is perfectly suited for processing PVC plastic window profiles, building decorative profiles, and other small plastic profiles. With a track record of exporting to over 50+ countries and regions, we deliver high-performance extrusion lines tailored to meet diverse industry needs.

Advantages of PVC Window Profile Extrusion Line

- ✓ Stable plasticization, high output, low shear rate, long service life.
- ✓ High-performance twin screw extruder ensures better homogenization, higher capacity, excellent reliability and unparalleled product quality of our PVC window profile extrusion line.
- ✓ After simple changing the screw and mould, the PVC window profile extrusion line also can produce other PE, PVC, PS foam profiles.
- ✓ Our PVC profile extrusion line is equipped with safe device to prevent workers from being injured during operation.

PVC Window Profile Extrusion Line Specification

High speed main **technical parameter**

Type	PEL240	PEL240	PEL240A
Max. width of product (mm)	240	240	150*2
Extruder model	TSP75/28	TSP93/30	TSP110/28
Max.extrusion capacity (kg/h)	150-250	250-400	400-500
Extruder power (kW)	45	55	90
Cooling water (m3/h)	7	8	10
Compressed air (m3/min)	0.6	0.6	0.8

Classic type main **technical parameter**

Type	PEL108	PEL240	PEL240A	PEL300	PEL400
Max. width of product (mm)	108	240	150*2	300	400
Extruder model	TSC55/11 0	TSC65/1 32	TSC65/1 32	TSC65/1 32	TSC80/ 156
Max.extrusion capacity (kg/h)	150	250	250	250	450
Extruder power (kW)	22	37	37	37	55
Cooling water (m3/h)	7	8	8	8	10
Compressed air (m3/min)	0.6	0.6	0.8	0.6	0.6

Extruder



- Our PVC window profile extrusion line has high output.
- Energy saving & easy operation.
- High precision and wear-resisting gearbox with the advantages of high-efficiency transmission and lower noise.
- Imported main motor, famous brand inverter and accurate electrical components.

Calibration unit



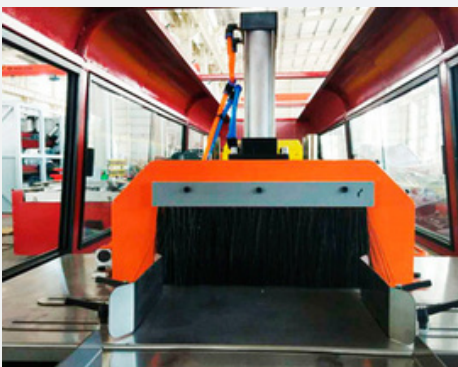
- Calibration table connects with haul-off unit by lead screw.
- Electrical cabinet and operation panel are protected by waterproof film.
- Could be moved by motor or by hand.

Haul Off



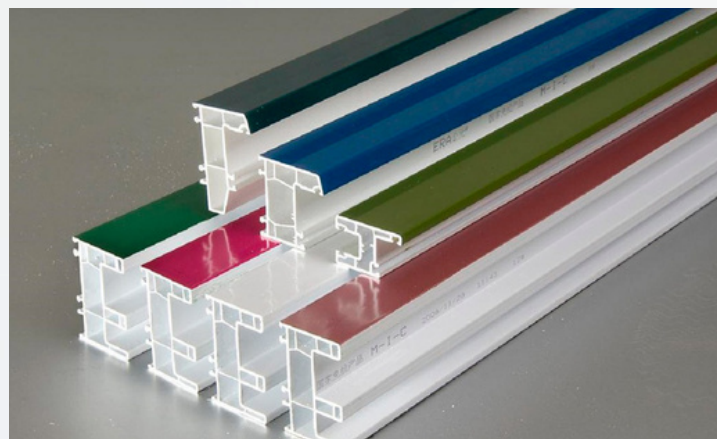
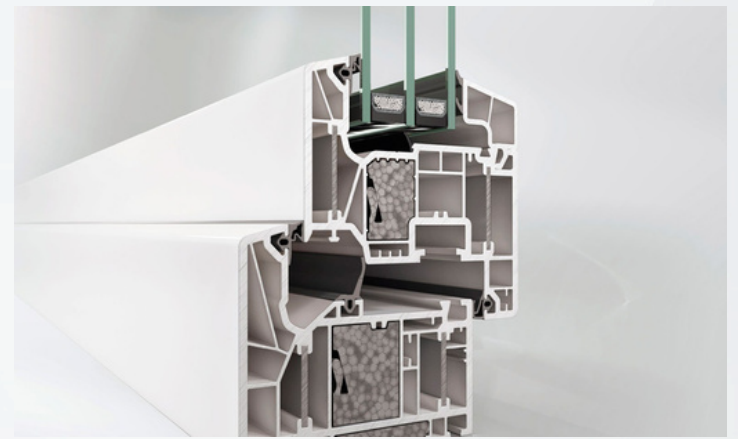
- Two tractors driven by two motors.
- Speed controlled by imported inverter.

Cutter



- Cutting knife movement and saw working controlled by pneumatic cylinder and PLC program system.
- Manual cutting and automatic cutting choice.
- Independent operation panel.

PVC Window Profile Extrusion Line Applications



PVC Window Shutter Extrusion Line



At Kriimpas India, we take pride in presenting our top-tier PVC window shutter extrusion production line. Our cutting-edge manufacturing facility offers support for both single-cavity and dual-cavity production, alongside seamless online automatic punching and cutting processes. With a specially engineered screw structure, we ensure uniform and stable foaming of products.

Advantages of PVC Window Profile Extrusion Line

- ✓ Provide complete set of technical solution from raw materials to finished products.
- ✓ Special designed screw geometries to process PVC material perfectly.
- ✓ We have own screw company founded in 1978, which means we can ensure sustainable after-sales service.
- ✓ Advanced computer control system keeps stable and smooth PVC profile production process.
- ✓ We are a manufacturing vendor with vertical set-up, which means we have a great control of supply chain and we are cost-effective.

Specification of PVC Window Profile Extrusion Line

Model	KPIS55/25 + KPIS30/25	KPIS65/25 + 35/25	KPI251/105
Production width	108mm	108mm	108mm
Output	20-30kg/h	30-40kg/h	60-80kg/h



Extruder



- High-efficient extruder brings higher output, uniform plasticization and stable production.
- Professional machining and assembly ensures extrusion stability and accuracy.
- Gearbox with Germany technology, long life, low noise.



Calibration unit

- The flow of water and gas can be precisely controlled, perfect coordination of molding molds.
- Long-term continuous and uninterrupted and stable production.
- Could be moved by motor or by hand.



Haul Off

- Precision traction with independent operation panel.
- Speed regulation by imported inverter.

Cutter&Punching Machine



- Accurate cutting length, smooth cutting surface.
- Punching cleanly.
- Free setting punching parameters cutting size, automatic control, suitable for different specifications of the window shutters.
- The online punching and cutting can be completed at the same time.

The Application of PVC Window Shutter Extrusion Line



PVC Door Frame Extrusion Line



Kriimpas India offers a cutting-edge PVC door frame extrusion line designed to craft door frames, window profiles, wall panels, ceilings, and various other PVC profiles with effortless mold changes. With over 12 years of extensive exporting experience and mastery in PVC profile extrusion technology, we provide comprehensive solutions from raw materials to finished products.

Advantages of PVC Door Frame Extrusion Line

- ✓ High output, energy saving, long service life.
- ✓ High-performance twin screw extruder ensures good homogenization, stable capacity, excellent reliability and unparalleled product quality.
- ✓ After simple changing the screw and mould, this PVC window profile making machine also can produce other PE PVC foam profiles, PVC window profile, PVC wall panel and ceiling.

Specification of PVC Door Frame Extrusion Line

High speed main **technical parameter**

Type	PEL240	PEL240	PEL240A
Max.width of product (mm)	240	240	150*2
Extruder model	TSP 75/28	TSP 93/30	TSP 110/28
Max.extrusion capacity (kg/h)	150-250	250-400	400-500
Extruder power (kW)	45	55	90
Cooling water (m3/h)	7	8	10
Compressed air (m3/min)	0.6	0.6	0.8

Classic type main **technical parameter**

Type	PEL108	PEL240	PEL240A
Max.width of product (mm)	108	240	150*2
Extruder model	TSC 55/110	TSC 65/132	TSC 65/132
Max.extrusion capacity (kg/h)	150	250	250
Extruder power (kW)	22	37	37
Cooling water (m3/h)	7	8	8
Compressed air (m3/min)	0.6	0.6	0.8

Extruder



- Special designed screw guarantees perfect plasticization, more durable.
- High precision and wear-resisting gearbox with advantages of high efficiency transmission and lower noise.
- Imported main motor, famous brand inverter and accurate electrical components.



Calibration unit

- Could be moved by motor or by hand.
- High pressure vacuum system keeps great product shape.



Haul Off

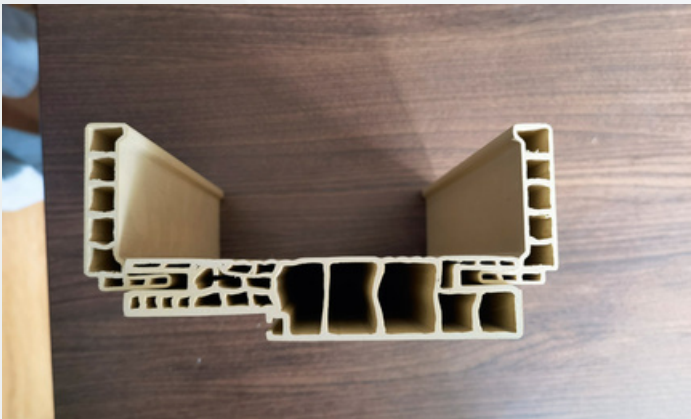
- Two tractors driven by two independent motors.
- Speed controlled by imported inverter.



Cutter&Punching Machine

- Cutting knife movement and saw working controlled by pneumatic cylinder and PLC program system.
- Independent operation panel.

The Application of PVC Door Frame Extrusion Line



PVC Folding Door Extrusion Line



With over 12 years of exporting experience and expertise in PVC profile extrusion technology, Kriimpas India offers comprehensive solutions for PVC folding door extrusion lines. From raw materials to final products, we deliver tailored solutions to meet your needs, ensuring top-quality results every time.

Advantages of PVC Folding Door Extrusion Line

- ✓ High quality extrusion machine, high capacity, longer service life.
- ✓ We support customized service based on customers real requirements.
- ✓ Adopt special screw geometries produced by own screw company to process PVC material very well.
- ✓ Precise temperature and pressure control system with easily operation panel.

Specification of PVC Folding Door Extrusion Line

Type	PEL108	PEL240	PEL240 A	PEL300	PEL400
Max.width of product (mm)	108	240	150*2	300	400
Extruder model	TSC55/110	TSC65/132	TSC65/132	TSC65/132	TSC80/156
Max.extrusion capacity (kg/h)	150	250	250	250	450
Extruder power (kW)	22	37	37	37	55
Cooling water (m3/h)	7	8	8	8	10
Compressed air (m3/min)	0.6	0.6	0.8	0.6	0.6

Extruder



- Latest computer PLC control system, high automation, easy operation.
- High precision and wear-resisting gearbox with Germany technology.
- Imported motor, famous brand inverter and accurate electrical components.



Calibration unit

- High pressure vacuum system keeps great product shape.
- Equipped with independent smart operation panel.



Haul Off

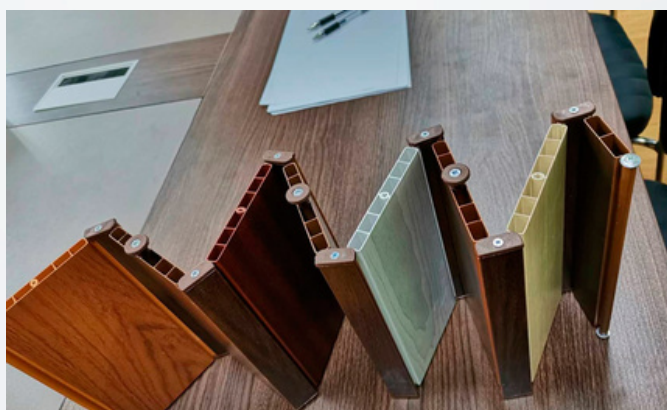
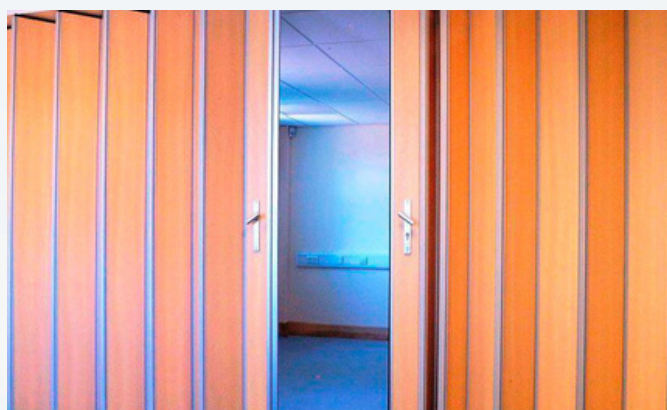
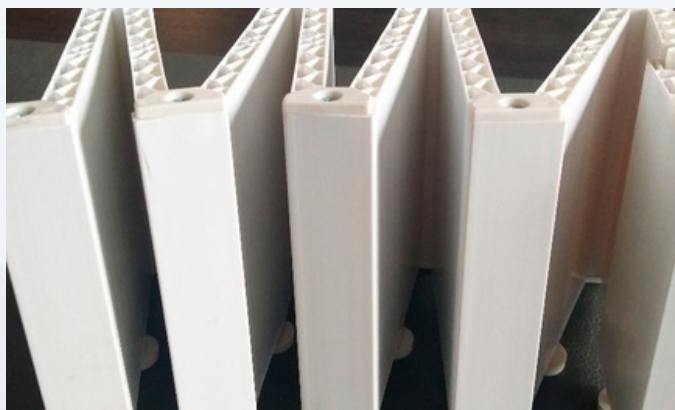
- Speed controlled by imported inverter.
- Pneumatic compression.



Cutter&Punching Machine

- Independent operation panel.
- Chipless cutting, flat section.

The Application of PVC Folding Door Extrusion Line



Hollow PVC Door Board Extrusion Line



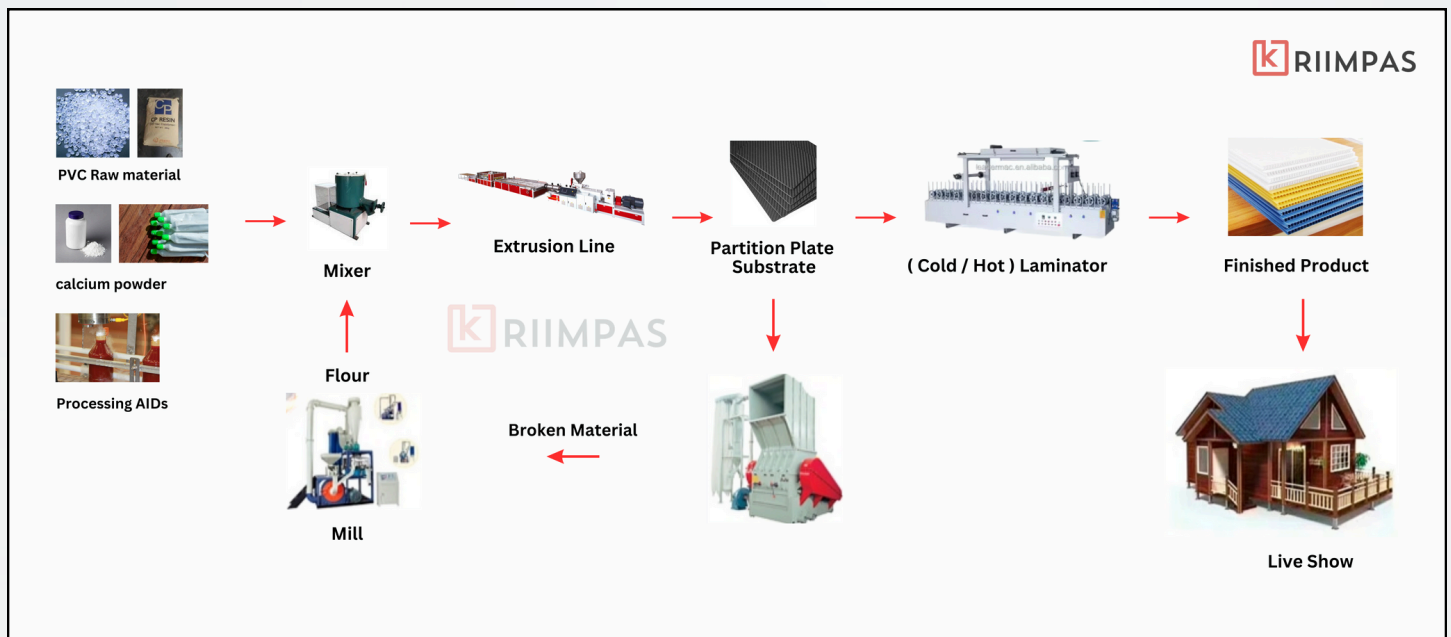
Kriimpas India presents its hollow PVC door board extrusion line, incorporating cutting-edge foam extrusion technology. Our line features the specially designed TSC92/188 conical twin screw extruder, renowned for superior plasticization, stable production, user-friendly operation, and durability. Prior to shipment, each of our plastic extrusion machines undergoes rigorous testing and commissioning to ensure exceptional quality and performance.

Advantages of Hollow PVC Door Board Extrusion Line

- ✓ Advanced screw design ensures low temperature plasticization of raw material and good temperature control system of screw inside part, which makes good quality of PVC door panels.
- ✓ The transmission system has the characteristics of high precision, low noise and long service life.
- ✓ Special cooling and heating system to make excellent plasticizing.
- ✓ Stainless steel machine frame, long service life.

Specification of Hollow PVC Door Board Extrusion Line

Type	PEL800	PEL1000	PEL1250
Max. width of product (mm)	800	1000	1250
Extruder type	TSC 80/156	TSC 92/188	TSC 92/188
Max. extrusion capacity (kg/h)	450	750	750
Extruder power (kW)	55	110	110
Cooling water (m3/h)	13	15	18
Compressed air (m3/min)	0.6	0.8	1



Extruder



- Based on computer PLC control system, easy operation.
- Screw material: alloy steel of high quality 38CrMoAlA, nitrogen treatment, with the thickness: 0.5~0.7mm, the surface hardness: HV740~940.
- Adopt high quality components to ensure high performance of extrusion.

Calibration unit



- Equipped with strong power cooling device, good quality calibration molds and high pressure vacuum control system.
- Calibration table and basin are made of stainless steel.

Haul Off



- Two caterpillars driven by two reduction motors.
- Speed controlled by imported inverter.
- Independent operation panel, easily adjust the haul off machine.

Cutter&Punching Machine



- Accurate and fast cutting with dust collector.
- Circular saw-blade: Alloy steel, specially design for cutting PVC profiles.
- Manual cutting and automatic cutting choice.

The Application of PVC Folding Door Extrusion Line



Worldwide Clientele



Unique selling point (USP)

Inhouse Design and development

Transparency

Diverse and well established supply chain

One Stop solution

Flexibility



Adaptability and Agility

One point troubleshooting

Cost-effective and comparable to imported equivalent

Proper consultation

Technology and Innovation Partners

GEFRAN

MULTISPAN

ABB

BECKHOFF

New Automation Technology

BSG



**mitsubishi
ELECTRIC**



Fuji Electric

Schneider
Electric

ZAMBELLO group

The Specialist in Extruder Gearboxes

Team

Vaibhav Patel

Designation CTO, Age 34 Years Old,
Qualification B Pharm, M Pharm in ceutics
(Extrusion based formulation)

Exp.: 10+ Year in field of extrusion (developed extrusion based automatic solutions for different polymers).

Payal Patel

• Director, • Age 32 Years Old, • Qualification CS exc. • Exp.: 6 years as CCO

Bharatkumar Patel

• Additional Director, • Age 68 Years Old, • Qualification D.CE. • Exp.: Retired DE from Guj. Gov.

In addition to above

• 2 full time QC engineers • 3 skilled technician • 2 Semi Skilled • 2 Design Engineers • And contractual staff for fabrication, assembly and wiring

Let's connect :

Phone: +91-9909900787

Email: info@kriimpasindia.com

Website: www.kriimpasindia.com



Office Address :

Plot No. 48, Kamlaamrut Ind. Park,
Opp. Torrent Pharmaceuticals,
Ahmedabad-Mehshana Highway,
Indrad, Kadi, Mehshana.